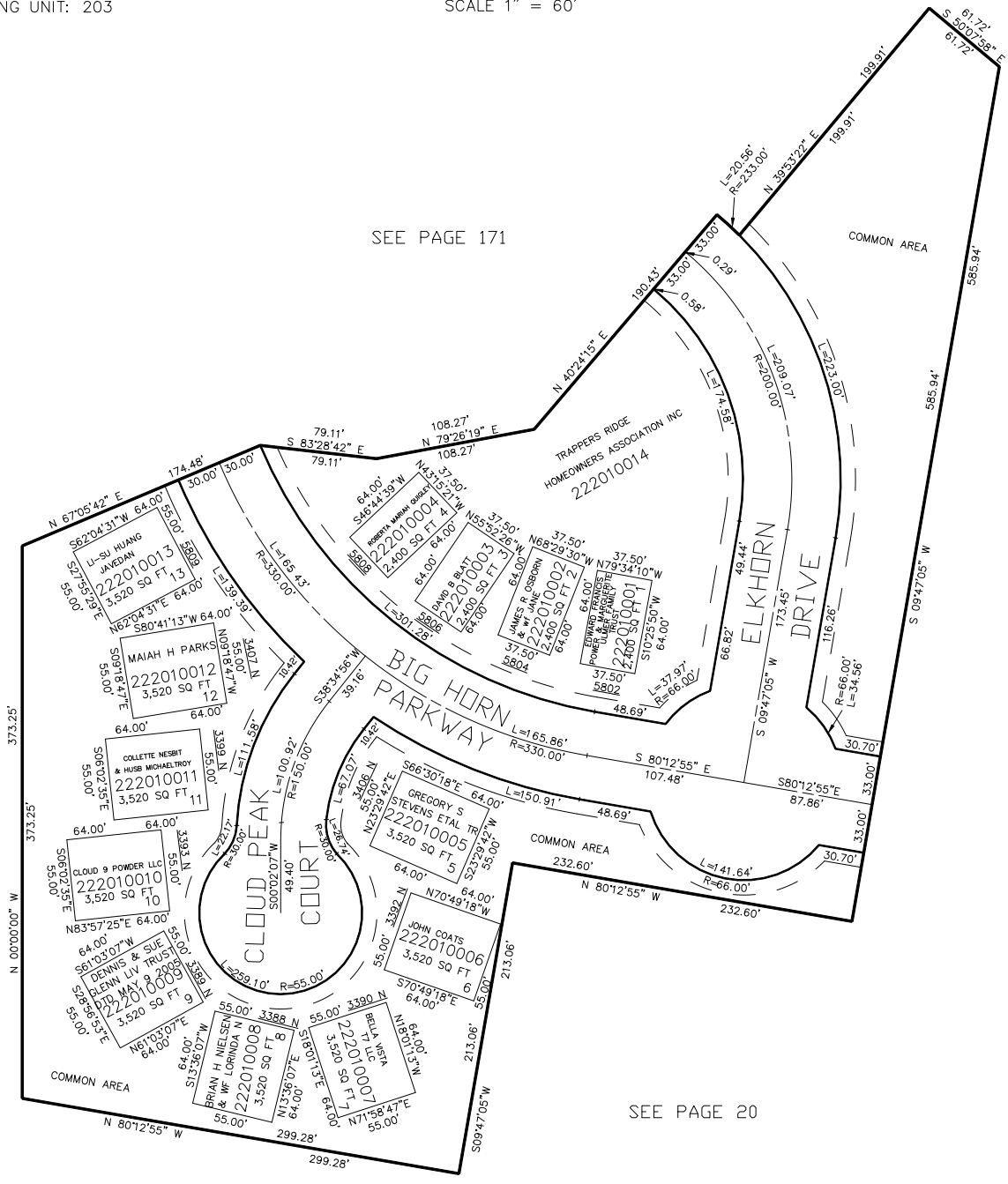


PART OF THE N.W. 1/4 OF SECTION 26, T.7N., R.1E., S.L.B. & M.
TRAPPERS RIDGE AT WOLF CREEK P.R.U.D. PHASE 1

IN WEBER COUNTY

TAXING UNIT: 203

SCALE 1" = 60'



SEE PAGE 171

SEE PAGE 20

SEE PAGE 20

SEE PAGE 20

10' UTILITY & DRAINAGE EASEMENTS EACH SIDE OF PROPERTY LINES AS INDICATED BY DASHED LINES EXCEPT AS OTHERWISE SHOWN.

FOR COMPLETE ENG DATA SEE ORIGINAL DEDICATION PLAT IN BOOK 56, PAGE 87 OF RECORDS.

FOR TAX PURPOSES ONLY